

Human IL-17A/CTLA-8 Protein

Cat. No. ILA-HM118

Description

| | |
|-------------------------|--|
| Source | Recombinant Human IL-17A/CTLA-8 Protein is expressed from HEK293 with His tag at the C-Terminus. It contains Gly24-Ala155. |
| Accession | Q16552-1 |
| Molecular Weight | The protein has a predicted MW of 16.2 kDa. Due to glycosylation, the protein migrates to 15-20 kDa and 25-30 kDa based on Bis-Tris PAGE result. |
| Endotoxin | Less than 1EU per μg by the LAL method. |
| Purity | > 95% as determined by Bis-Tris PAGE > 95% as determined by HPLC |

Formulation and Storage

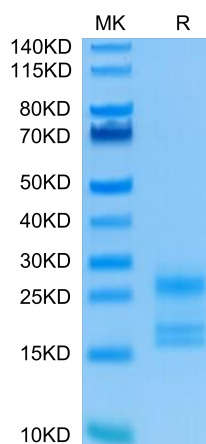
| | |
|-----------------------|---|
| Formulation | Lyophilized from 0.22 μm filtered solution in PBS (pH 7.4). Normally 8% trehalose is added as protectant before lyophilization. |
| Reconstitution | Centrifuge the tube before opening. Reconstituting to a concentration more than 100 $\mu\text{g}/\text{ml}$ is recommended. Dissolve the lyophilized protein in distilled water. |
| Storage | -20 to -80°C for 12 months as supplied from date of receipt. -80°C for 3 months after reconstitution. Recommend to aliquot the protein into smaller quantities for optimal storage. Please minimize freeze-thaw cycles. |

Background

Interleukin17A (IL17A), also known as CTLA8, is a 1520 kDa glycosylated cytokine that plays an important role in antimicrobial and chronic inflammation. The six IL17 cytokines (IL17AF) are encoded by separate genes but adopt a conserved cystine knot fold. IL-17A is a ligand for IL17RA and IL17RC. The heterodimer formed by IL17A and IL17F is a ligand for the heterodimeric complex formed by IL17RA and IL17RC. Involved in inducing stromal cells to produce proinflammatory and hematopoietic cytokines.

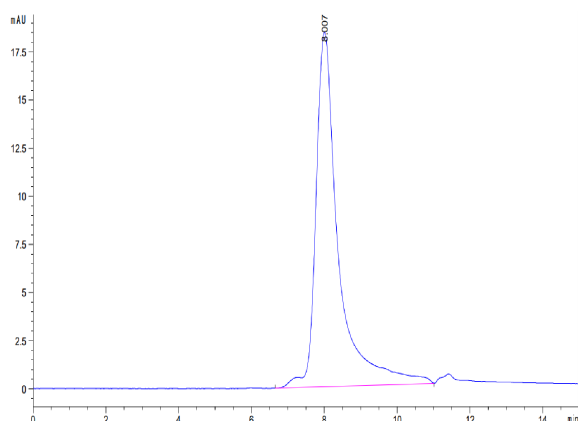
Assay Data

Bis-Tris PAGE



Human IL-17A on Bis-Tris PAGE under reduced condition. The purity is greater than 95%.

SEC-HPLC



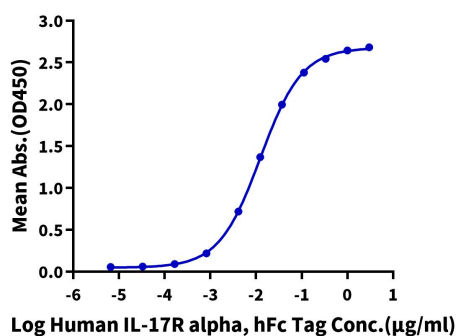
The purity of Human IL-17A is greater than 95% as determined by SEC-HPLC.

Assay Data

ELISA Data

Human IL-17A, His Tag ELISA

0.1µg Human IL-17A, His Tag Per Well

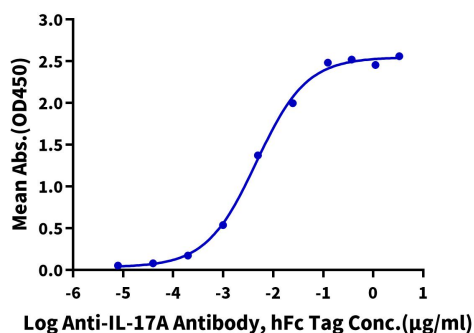


Immobilized Human IL-17A, His Tag at 1µg/ml (100µl/well) on the plate. Dose response curve for Human IL-17R alpha, hFc Tag with the EC50 of 12.4ng/ml determined by ELISA (QC Test).

ELISA Data

Human IL-17A, His Tag ELISA

0.05µg Human IL-17A, His Tag Per Well

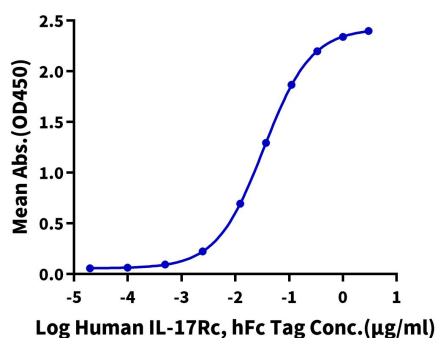


Immobilized Human IL-17A, His Tag at 0.5µg/ml (100µl/well) on the plate. Dose response curve for Anti-IL-17A Antibody, hFc Tag with the EC50 of 4.6ng/ml determined by ELISA.

ELISA Data

Human IL-17A, His Tag ELISA

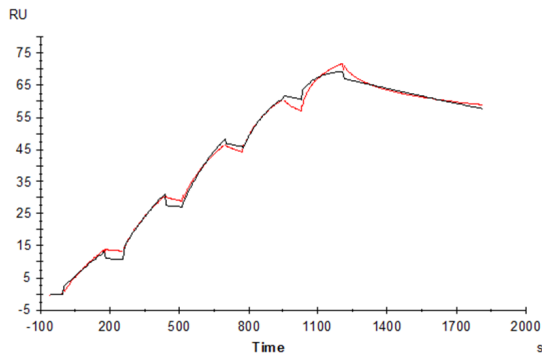
0.2µg Human IL-17A, His Tag Per Well



Immobilized Human IL-17A, His Tag at 2µg/ml (100µl/Well) on the plate. Dose response curve for Human IL-17Rc, hFc Tag with the EC50 of 33.8ng/ml determined by ELISA.

SPR Data

Assay Data



Human IL-17R alpha, His Tag immobilized on CM5 Chip can bind Human IL-17A, His Tag with an affinity constant of 1.57nM as determined in SPR assay (Biacore T200) (Routine Test).